



GMT MONTHLY MEMBERSHIP PROGRESS REPORT

Results as of: 6/30/2020

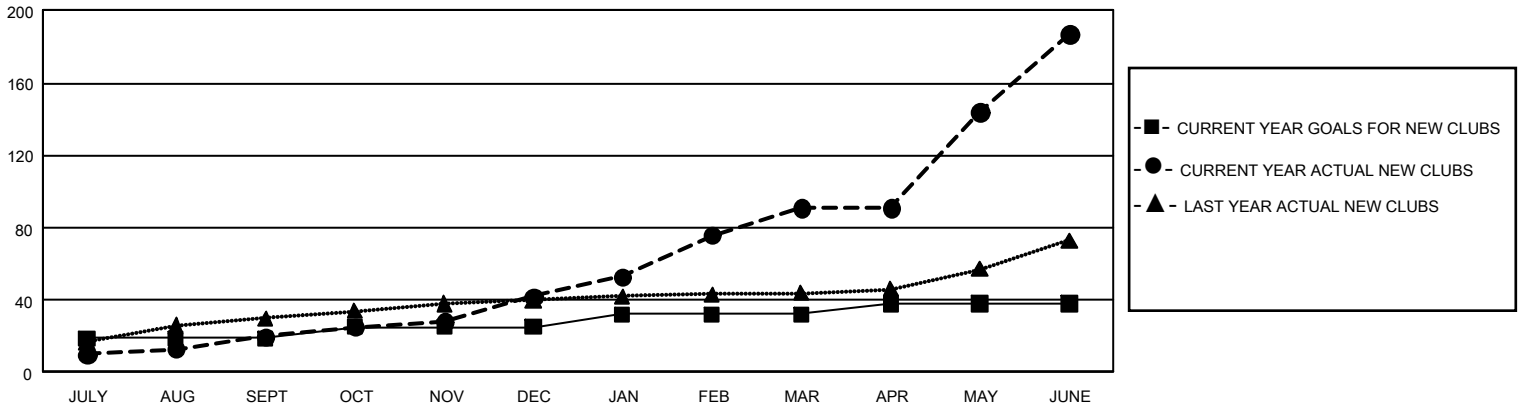
GMT Constitutional Area 6, Group N

GMT: OPEN

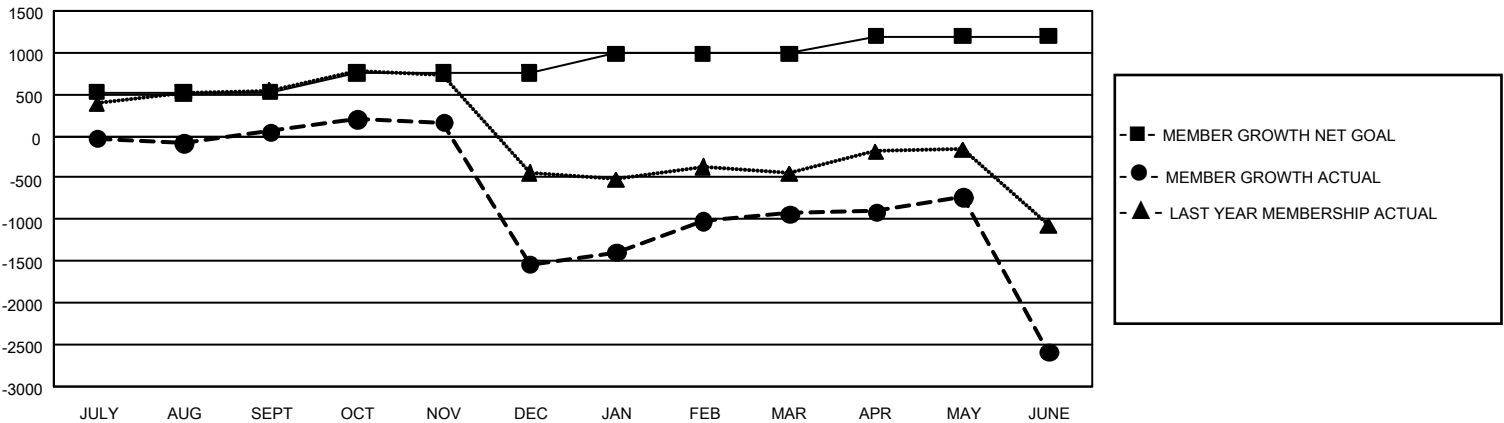
REPORT DOES NOT INCLUDE CLUBS IN UNDISTRICTED AREAS.

Clubs				Members			
RESULTS FOR 2019-2020				RESULTS FOR 2019-2020			
QUARTER	NEW CLUB GOAL	NEW CLUBS	DROPPED CLUBS	QUARTER	MEMBER GROWTH NET GOAL	MEMBER GROWTH ACTUAL	DROPPED MEMBERS ACTUAL (including transfers)
JULY/AUG/SEPT	57	20	3	JULY/AUG/SEPT	1,575	743	636
OCT/NOV/DEC	18	22	34	OCT/NOV/DEC	690	675	2,196
JAN/FEB/MAR	21	49	7	JAN/FEB/MAR	705	1,219	311
APR/MAY/JUNE	18	96	1	APR/MAY/JUNE	630	1,095	2,603

GOALS AND ACTUAL NEW CLUBS CUMULATIVE



GOALS AND ACTUAL MEMBERS CUMULATIVE



DROPPED CLUBS: 45	516 CLUBS OF 833 ADDED 1 OR MORE NEW MEMBERS	<u>GENDER DISTRIBUTION</u> MALE 13,893 (68.94%) FEMALE 6,259 (31.06%)
<u>DROPPED MEMBERS</u> DECEASED 60 CLUB CANCELLED 1,647 OTHER 4,039 <hr/> TOTAL 5,746	CLICK HERE FOR CUMULATIVE MEMBERSHIP DATA	TOTAL FAMILY UNIT MEMBERS 7,039 FAMILY MEMBERS PAYING HALF DUES 3,893